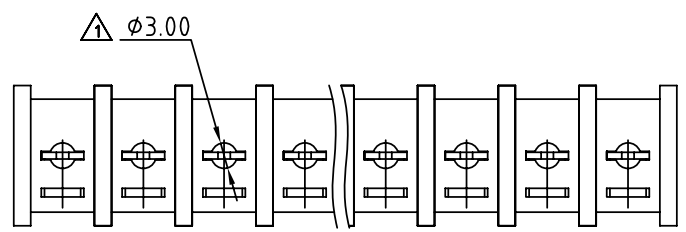
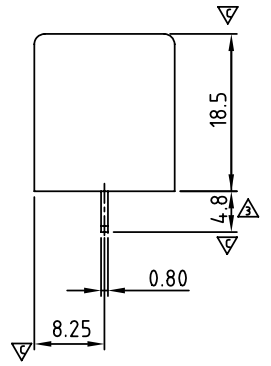
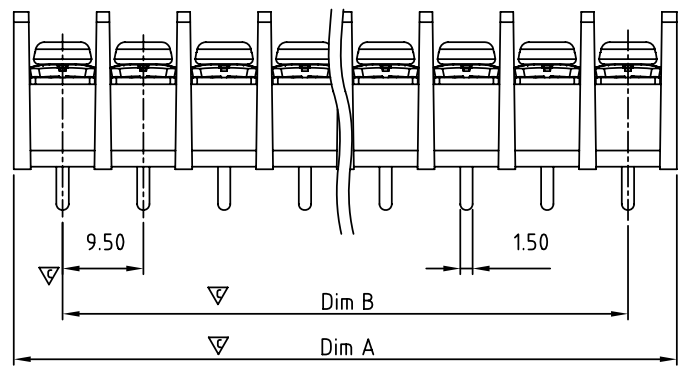
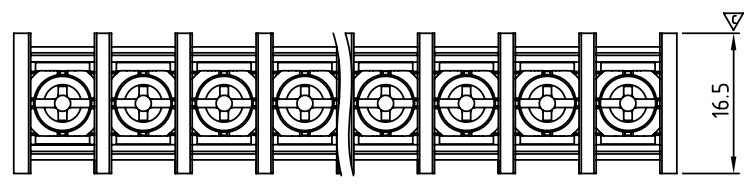


SIGN	DATE	DESCRIPTION	APPROVER
△	10/14/08	將Body底部方槽改為φ3.0圓孔形	kind
△	09.4.13	Current, wire range, approval are changed	JODY
△	12/08/09	Dimension is changed from 5.0mm to 4.8mm	Aaron
△	10/27/12	Change the dimensional tolerance	Jacky
△	10/27/12	Change the screw plating specification	Jacky

THIS IS CAD DRAWING, DO NOT REVISE MANUALLY!!!

MATERIALS ELECTRICAL
 RATED VOLTAGE & CURRENT: 300 V, 30A △
 WITHSTAND VOLTAGE: AC 2000 V/Min
 INSULATION RESISTANCE: 1000 MΩ OR MORE AT DC 500 V
 OPERATING TEMPERATURE RANG: -40 °C ~ +115 °C
 SCREW TORQUE VALUE: 8.8 Lb-In.
 WIRE RANGE: 10-22AWG △
 1) MOLDED PARTS: Thermoplastic, UL 94 V-0 BLACK
 2) TERMINAL: BRASS, 0.8t, Tin PLATED
 3) TERMINAL SCREWS: STEEL, M3.5

△ APPROVAL: US
 PART NO.:
 Critical dimension: ▽
YK 511 xx 0 x x 00G
 NO. OF POLES ————
 02: 2 POLES
 03: 3 POLES
 04: 4 POLES
 :
 30: 30 POLES
 MARK
 0: "@ " MARK
 1: "ANY " MARK
 ———— TERMINAL & SCREW PLATED
 0: TERMINAL & SCREW: G/F
 △ 1: TERMINAL: G/F, SCREW: Zinc
 2: TERMINAL: Sn, SCREW: G/F
 △ 3: TERMINAL: Sn, SCREW: Zinc

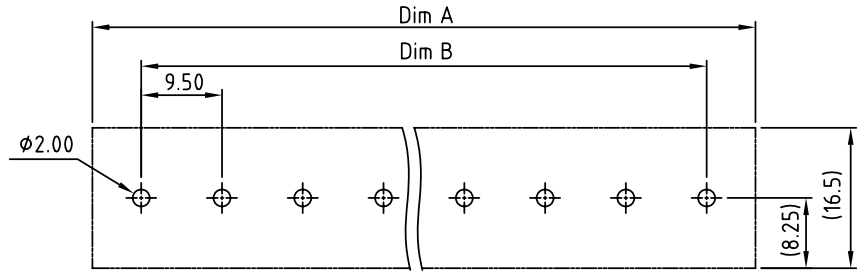


N=Number of contacts

Dimension A & B

DIM A	$N \times 9.5 + 2.0$
DIM B	$(N - 1) \times 9.5$

Dimension A & B	Tolerance
>6 ~ 30	±0.30
>30 ~ 120	±0.40
>120 ~ 400	±0.60



PCB Layout

ANYTEK				CUSTOMER COPY			
ALL RIGHTS RESERVED. REPRODUCTION OR ISSUE TO THIRD PARTIES IN ANY FORM WHATSOEVER IS NOT PERMITTED WITHOUT WRITTEN AUTHORITY FROM THE PROPRIETOR. PROPERTY OF ANYTEK TECHNOLOGY CO., LTD							
TITLE		YK-511 W/O Flange Series					
PART NO.		YK511xx0xx00G		DWG NO.		8YK0001-511	
APPROVED		CHECKED		DESIGNED		DRAWN	
				Jacky 2012.10.27		Jacky 2012.10.27	
				CUST NO.		Tolerance	
						X. ±0.50	
				UNIT: mm		X.X ±0.30	
				SCALE: NONE		X.XX ±0.10	
				SHEET: 01/01		X° ±1°	
				REV.: H			